



MONTHLY MEMBERSHIP PROGRESS REPORT

District 26 M3

Results as of: 06/30/2019

GMT: OPEN

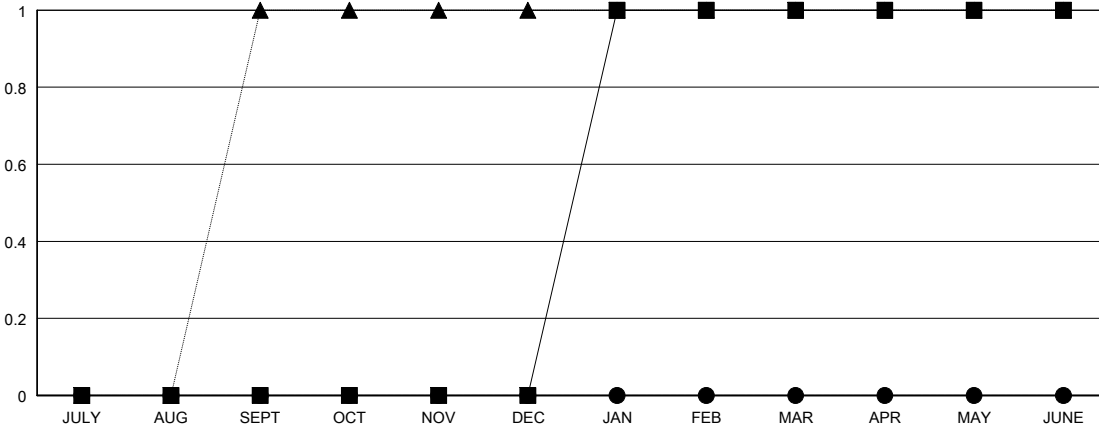
LOCATION MISSOURI

GMT CA

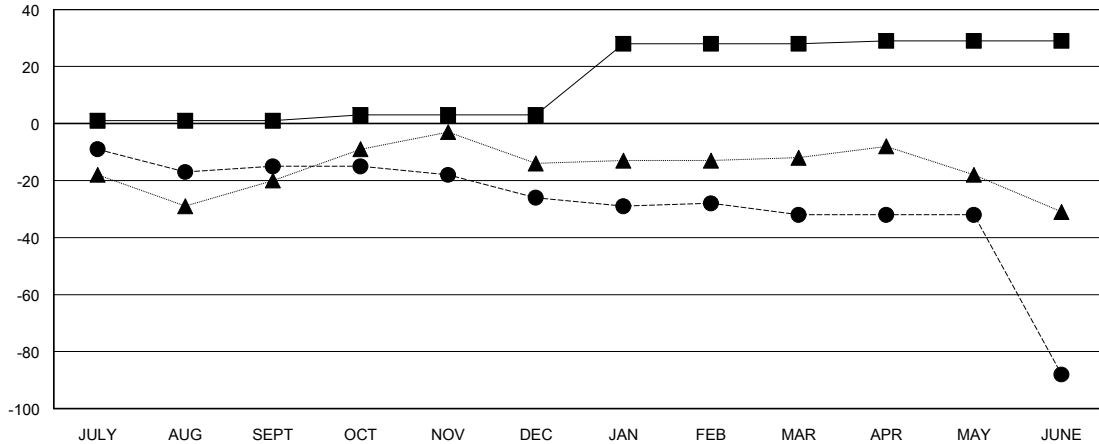
Clubs			
RESULTS FOR 2018-2019			
QUARTER	NEW CLUB GOAL	NEW CLUBS	DROPPED CLUBS
JULY/AUG/SEPT	0	0	0
OCT/NOV/DEC	0	0	0
JAN/FEB/MAR	1	0	0
APR/MAY/JUNE	0	0	3

Members			
RESULTS FOR 2018-2019			
QUARTER	MEMBER GROWTH NET GOAL	MEMBER GROWTH ACTUAL	DROPPED MEMBERS ACTUAL (including transfers)
JULY/AUG/SEPT	1	18	30
OCT/NOV/DEC	2	36	43
JAN/FEB/MAR	25	21	23
APR/MAY/JUNE	1	22	75

GOALS AND ACTUAL NEW CLUBS CUMULATIVE



GOALS AND ACTUAL MEMBERS CUMULATIVE



DROPPED CLUBS: 3	26 CLUBS OF 59 ADDED 1 OR MORE NEW MEMBERS	<u>GENDER DISTRIBUTION</u> MALE 948 (76.02%) FEMALE 299 (23.98%) Women Percentage Fiscal Year Goal: 22%
<u>DROPPED MEMBERS</u> DECEASED 23 CLUB CANCELLED 14 OTHER 134 TOTAL 171	CLICK HERE FOR CUMULATIVE MEMBERSHIP DATA	TOTAL FAMILY UNIT MEMBERS 126 FAMILY MEMBERS PAYING HALF DUES 65